

# ROBAN

## Instruction manual

Scale Fuselage BO 105

600 size



### 1. INTRODUCTION

Thank you for buying Roban Model products. The 600 size MD500D/E scale fuselage is designed as an easy to use product. Please read the manual carefully before assembling the model, and follow all precautions and recommendations located within the manual. Be sure to retain the manual for future reference, routine maintenance and tuning. The scale fuselage is designed for T-REX 600 Helicopter series use. You can easily put it on your T-REX 600 for new clothing.

#### **Important Note**

Roban Model R/C Helicopters are advanced, high-performance devices, built incorporating the latest technologies. They are not intended as toys, and improper use can potentially lead to serious injury, or even fatal accidents. We implore you to read this manual thoroughly before operating these models. Safety should be your utmost priority - not just your own, but also that of others and your surroundings when piloting Roban Model products.

#### **Liability Disclaimer:**

The manufacturer and the seller cannot accept liability for the operation or misuse of this product. Roban Model R/C helicopters are intended to be used exclusively by experienced adults in legally sanctioned flying fields. Once sold, we cannot monitor or control the product's operation or usage.

#### **Operation Guidelines:**

Upon assembly of the scale fuselage, the weight and complexity of the structure will increase. To mitigate risk of accidents and damages, we advise against attempting 3D flights.

#### **Skill Requirements:**

# ROBAN

The operation of R/C products necessitates a certain level of skill and familiarity. Any damages or dissatisfaction resulting from accidents, modifications, or operational mishaps are not covered under any warranty. Consequently, such products cannot be returned for repair or if you experience problems during operation or maintenance.

## 2. OPERATIONAL GUIDELINES FOR SAFETY IN USING R/C AIRCRAFT MODELS

### **Safety Zone:**

Prioritize the safety of others by operating R/C aircraft models in isolated areas, free of bystanders. Avoid piloting these models near residential zones or large groups of people.

### **Operational Risks:**

Be aware that R/C aircraft models are susceptible to accidents, malfunctions, and crashes. These may result from a range of factors such as inadequate maintenance, pilot errors, or radio interference. Understanding these risks is crucial for safe operation.

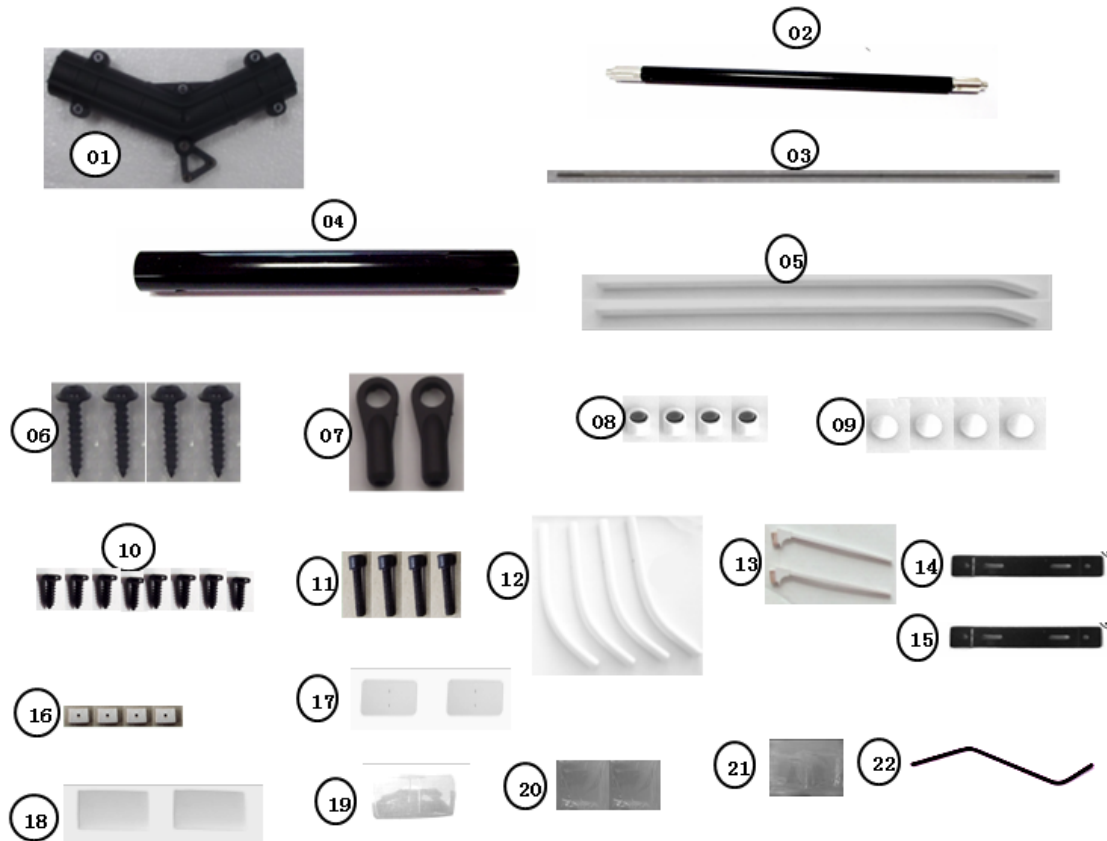
### **Pilot Responsibility:**

Pilots bear the sole responsibility for any damage or injuries that may occur during operation or as a result of using R/C aircraft models. By undertaking the control of these devices, you accept accountability for your actions and their possible consequences. Always aim for caution and responsible handling to minimize any potential risks.

# ROBAN

## 3. CONTENTS OF KIT

Please check the contents of the kit prior to installat.



## CONTENTS

Item No.	Description	Quantity
1	Rear redirection	x2
2	Tail shaft	x1
3	Linkages 2x196	x2
4	Tail tube	x1
5	Landing gear skids	x2
6	Screw A3x16	x4
7	Ball joint connectors	x2
8	T-connectors	x4
9	End caps	x4
10	Screw A2x6	x10
11	Screw M3x22	x4
12	Landing gear struts	x4
13	Step	x2
14	Holder 100x18x6	x1

# ROBAN

15	Holder 100x18x12	x1
16	Wooden holders	x4
17	Vertical tail unit	x2
18	Horizontal tail unit	x2
19	Skylight windows	x2
20	Side windows	x2
21	Rear windows	x2
22	Tail skid	x2

---

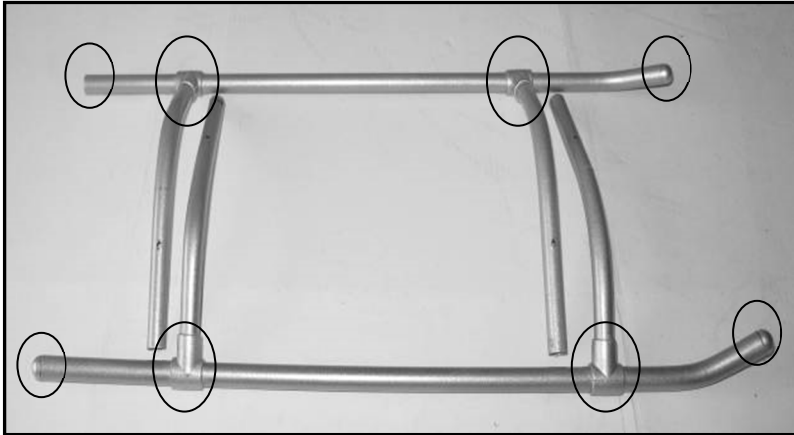
## REQUIRED TOOLS / CONSUMABLES

<b>Tool No.</b>	<b>Tool/Consumable</b>
1	Hobby knife
2	Allen wrench
3	Phillips screwdriver
4	File
5	Side cutters
6	Silicone adhesive
7	Super glue
8	2K Epoxy glue
9	Fine sandpaper
10	Scissors

# ROBAN

## 4. INSTALLATION

4.1 Assemble the landing gear as shown, glue in the end caps.



4.2 Secure the landing gear with 4 pieces of Screw M3x22 as shown.

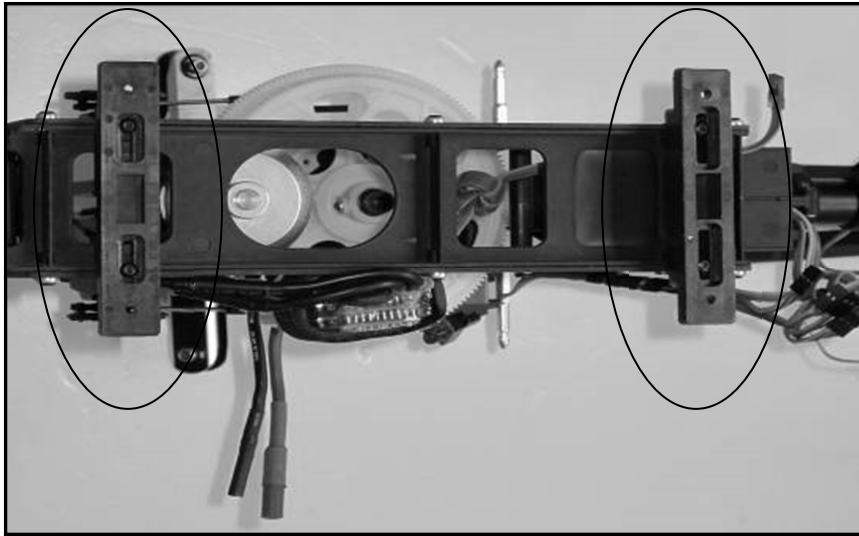


4.3 Glue all windows as shown.



# ROBAN

4.4 Mount the holders to the mechanism as shown.



4.5 Dismantle the tail frame.

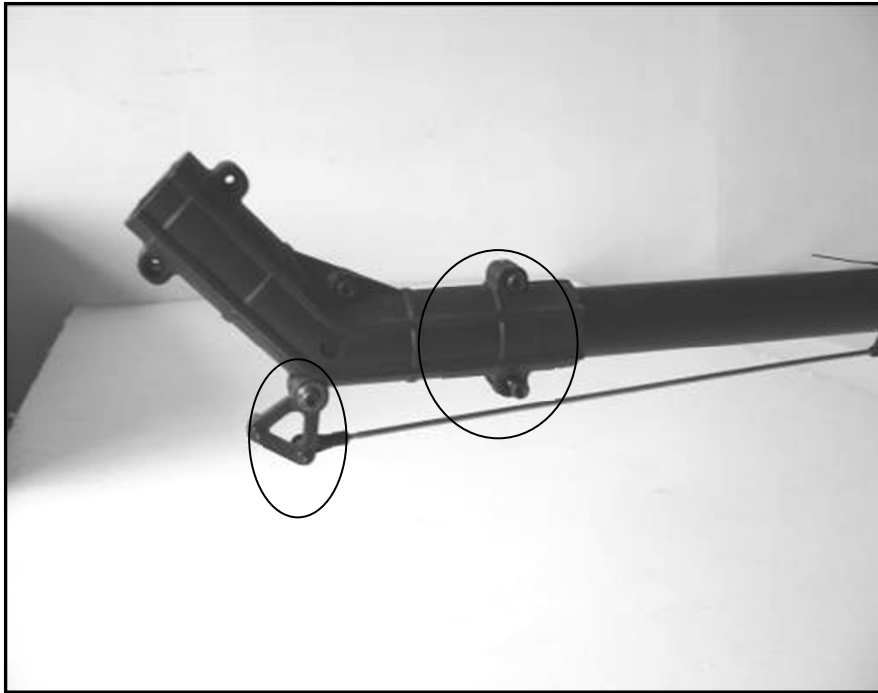


4.6 Mount the short tail tube and the linkage.

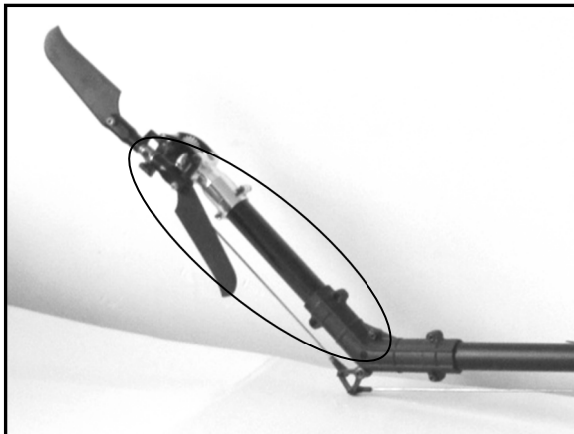


# ROBAN

4.7 Mount the redirection as shown on the tail tube.



4.8 Mount the tail frame to the mechanism as shown.

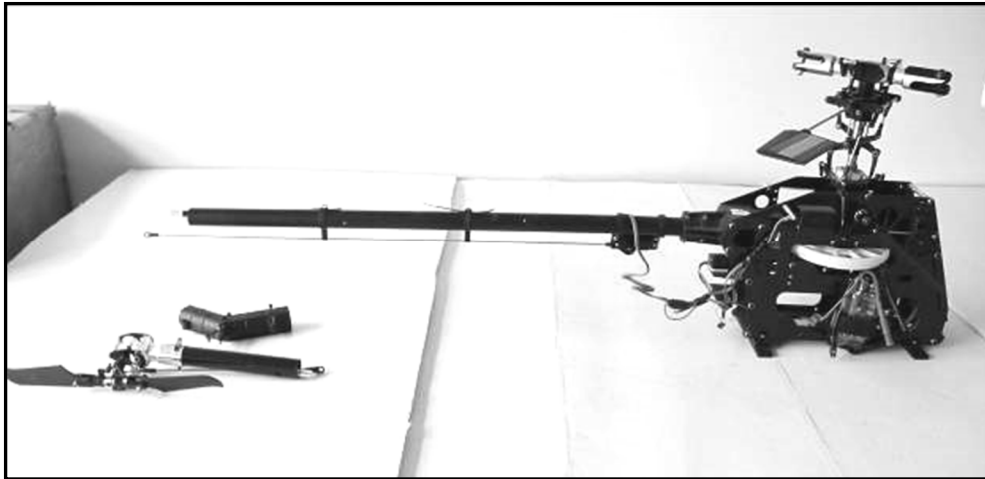


4.9 Adjust the mechanics, install all electronics. Test fly if possible.



# ROBAN

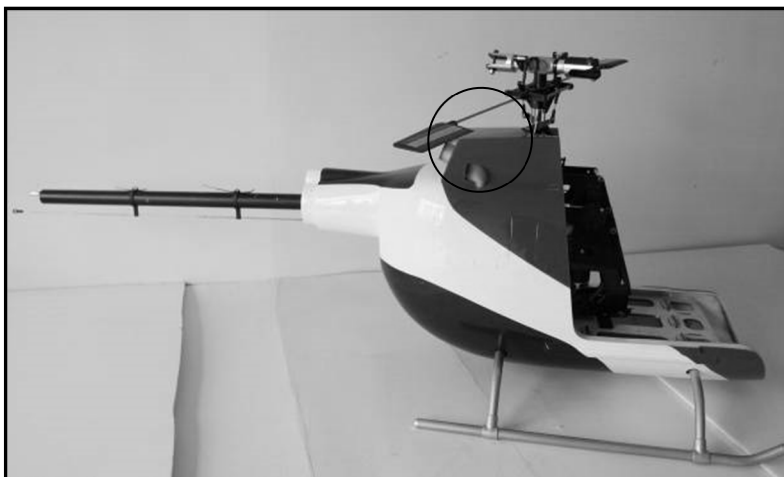
4.10 Dismantle the tail as shown.



4.11 Mount the mechanism in the fuselage.



4.12 Slide it all the way to the back.



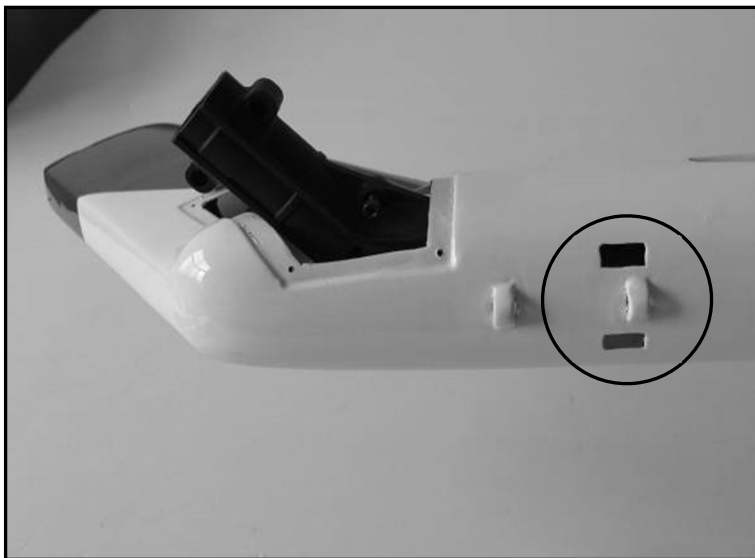


# ROBAN

4.13 Slide the tail onto the tail tube as shown.



4.14 When the tail is rotated as shown, you can mount the screws.

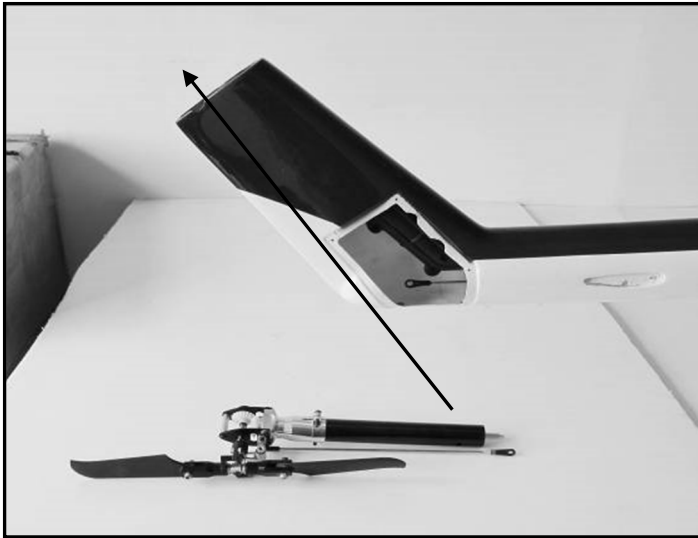


4.15 Mount the tail as shown.

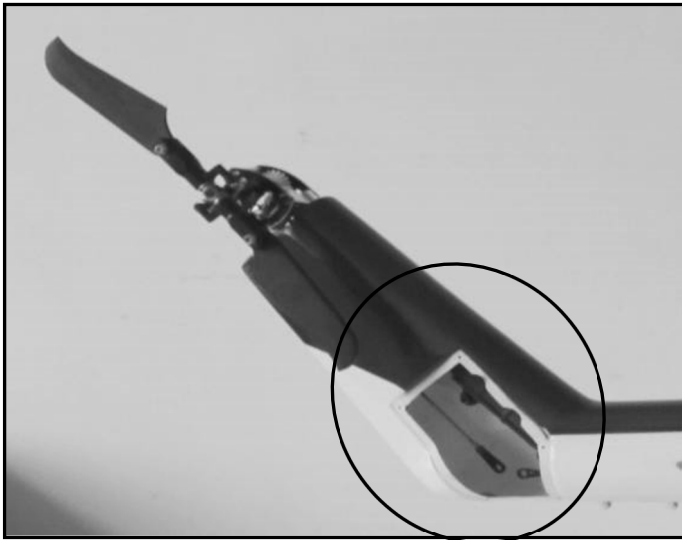


# ROBAN

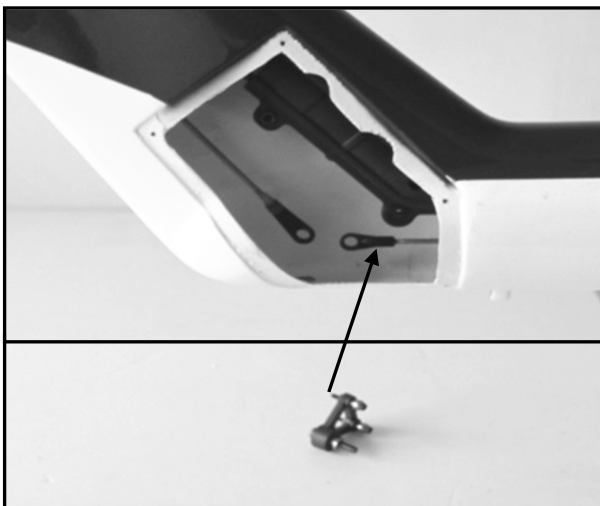
4.16 Mount the short tail tube from above.



4.17 Mount the linkage from above.



4.18 Mount the linkage redirection lever as shown.

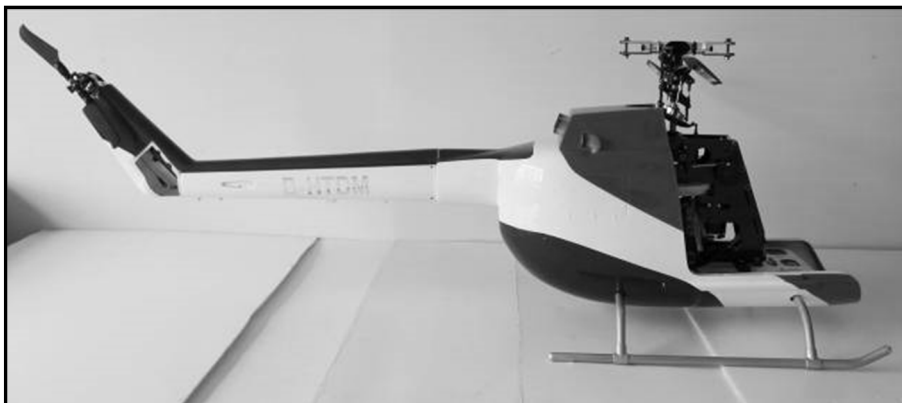


# ROBAN

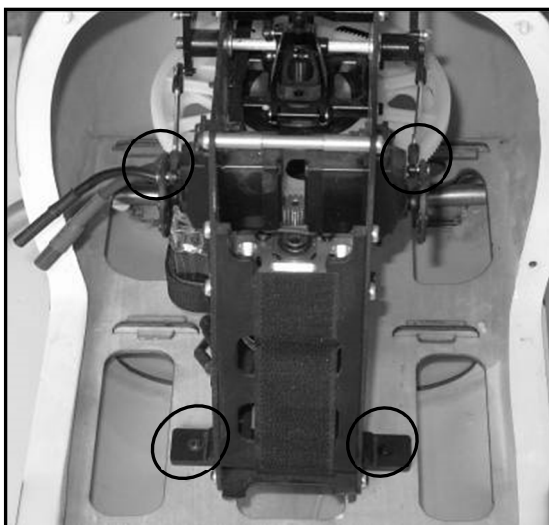
4.19 Mount the tail cover.



4.20 Adjust the position of the mechanism.

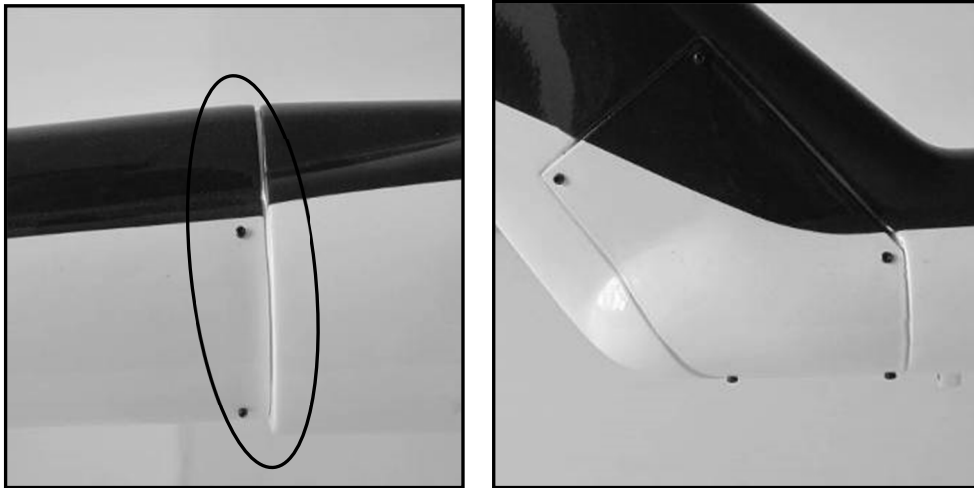


4.21 Screw the mechanism in the fuselage as shown.

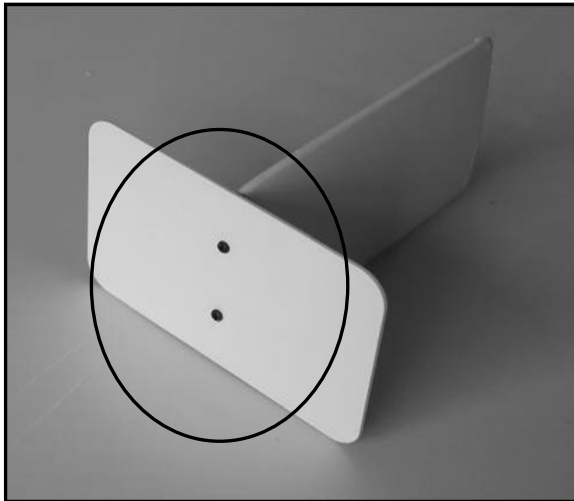


# ROBAN

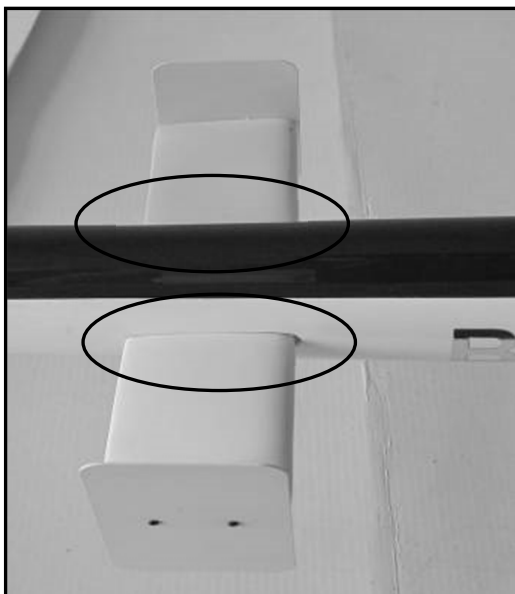
4.22 Secure the tailgate and the tail tube as shown.



4.23 Screw the tail unit as shown.

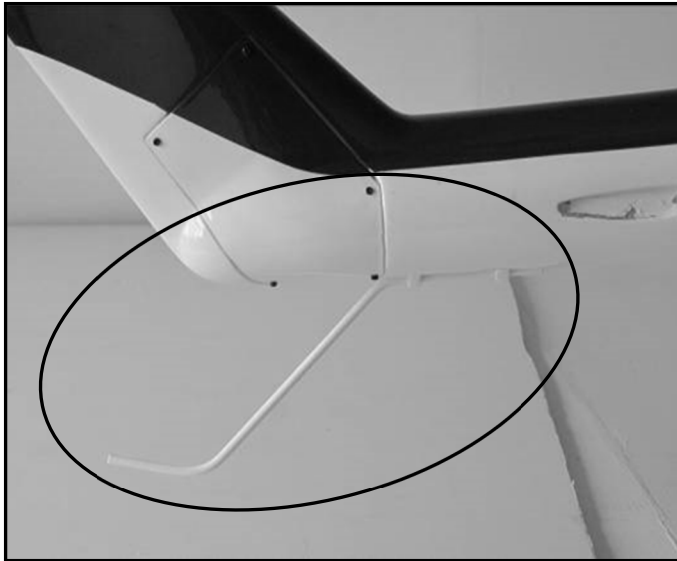


4.24 Glue the tail units as shown.

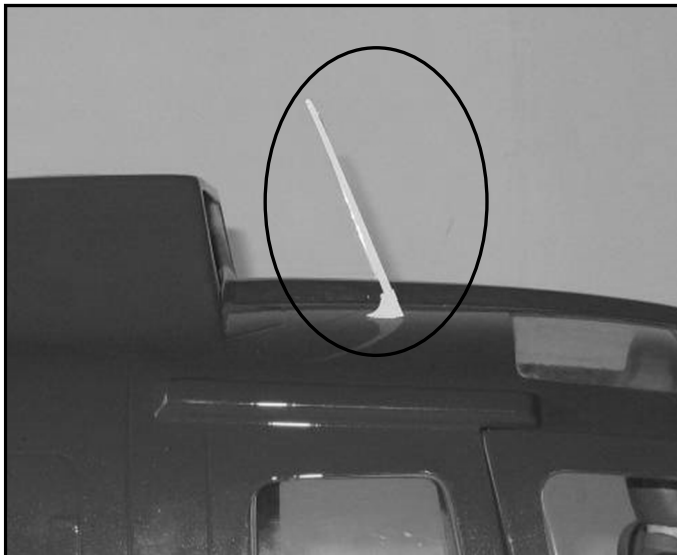


# ROBAN

4.25 Secure the tail skid as shown.



4.26 Glue the antenna in as shown.



# ROBAN

## 6. SPAREPART LIST

HSB-B0600RB	B0600PJ001		600B0105 前 头含门	600 B0-105 canopy
	B0600PJ002		600B0105 前 窗	600 B0-105 front window
	B0600PJ003		600B0105 全 套窗	600 B0-105 all windows
	B0600PJ004		600B0105 平 垂尾	600 B0-105 tail wings
	B0600PJ005		600B0105 升 级铁齿组	600 B0-105 gear set
	B0600PJ006		600B0105 脚 架组	600 B0-105 landing gear set
	B0600PJ007		600B0105 水 印	600 B0-105 decal set
	B0600PJ008		600B0105 尾 拖	600 B0-105 tail distancer set
	B0600PJ009		600B0105 装 饰件	600 B0-105 antenna set
	B0600PJ010		600B0-105 座 椅含公仔	600 B0-105 cockpit set
	B0600PJ011		600B0105 短 尾管+轴+拉 杆	600 B0-105 tail tube set

# ROBAN

	600WBX01		600 轴传通用 尾波箱扇齿	600 B0-105 bevel gear set
	600WBX		600 轴传通用 尾波箱	600 B0-105 tail gearbox

# ROBAN

## 6. FULLY ASSEMBLED FUSELAGE



### Specifications:

Length: 1335mm

Height: 435mm

Width: 380mm

Weight: 1490g

Suitable for Align TREX600ESP/EFL/PRO and derivatives



We wish you a lot of fun with the fuselage!

# ROBAN

Copyright 2024 – [www.robanmodel.com](http://www.robanmodel.com)